



# Kyoto University Campus Tour



# concept

## Kyoto University Campus Tour: Enjoyable for Students and Adults Alike

This tour allows both students and adults to experience the academic and research environment of Kyoto University.

A contemporary guide for Kyoto University students will offer a clear introduction to the themes and objectives of the research being conducted at Kyoto University, along with specific initiatives.

The tour content is easy for students to follow and engaging for adults as well.  
Kyoto University is home to a wide range of unique and innovative research projects that continue to evolve every day.

We hope you will enjoy discovering the spirit of independence and originality that defines Kyoto University.

# ツアーの特徴

- We design tours that appeal to both students and adults
- We provide tour samples customized to meet diverse requirements.
- The minimum number of participants is 1, and small groups are welcome.
- Multiple plans can be combined upon request.

We provide tailored campus tours to meet your specific requirements.



# Tour Features

- We design tours that appeal to both students and adults
- We provide tour samples customized to meet diverse requirements.
- The minimum number of participants is 1, and small groups are welcome.
- Multiple plans can be combined upon request.

We provide tailored campus tours to meet your specific requirements.



# 2025 results

Our organization has been conducting campus tours for more than a decade.  
In 2025, we will host a diverse array of events, featuring esteemed educational institutions,  
international organizations, and researchers.

Our tours serve a wide range of audiences with diverse objectives.

- Preparatory school (50/65 second-year high school students) \*Campus tour and roundtable discussion agenda
- Overseas group (Summer school, 19 participants) \*Campus tour itinerary
- University officials (6 international faculty members) \*Cultural Heritage and Knowledge Walking Tour



# Table of Contents



01 concept

02 6 Tour Plans

03 how to submit an application

04 FAQs



# Six tours to select from.

01

For 1 to 10 participants!  
**Small group Plan**

02

Envision yourself after  
achieving success!  
**Examinee Plan**

03

Explore Kyoto University  
**Graduate Plan**

04

Image of student life  
**International Student  
Plan**

05

Highly recommended prior to  
a conference!  
**Researcher Plan**

06

An essential destination for  
architecture enthusiasts.  
**Tourist Plan**





# ① Small group plan

## Scheduled campus tours

This tour is ideal for individuals seeking a relaxed exploration of Kyoto University.

Due to the small class size, you are encouraged to pose any questions you may have to current students of Kyoto University. If there are any reservations, the tour will be held as scheduled.

Date and  
Time

Every Saturday from 10:00 to 11:00  
\*Meeting time: 9:50

cost

3,000 yen/person  
Please submit your application through  
the form at least three days in advance.

Meeting  
location

In front of the Centennial Clock  
Tower Memorial Hall.

Minimum  
participant

from 1 person

QR code for  
website





# Regular Campus Tour Schedule



9 : 5 0      gather

1 0 : 0 0

1 0 : 1 5      Faculty of Law and Economics / Faculty of Engineering Building Area  
Some of the research conducted at each faculty is also presented.

1 0 : 3 0      Sonjodo, a nationally recognized tangible cultural asset  
Regularly scheduled internal tours are also available with prior reservations.

1 0 : 4 5      Box Building (Club Activities Center) & Western Auditorium  
A "Kyoto University-style area" managed independently by students

1 1 : 0 0      Dismiss in front of the clock tower.

Following the tour, We recommend having lunch at the university cafeteria..





# ①Small group plan

## Personal Career Counseling

We integrate the "strengths" and "future aspirations" of junior and senior high school students to explore the research domains and careers that genuinely align with their interests. To assist students in reaching their objectives, we may propose "unexpected destinations" beyond Kyoto University. It will be an opportunity for new insights and discoveries.

### duration

1 hour  
Reservations must be made that your reservation is made at least one week in advance.

### cost

3,000 yen per person and above  
\* Varies based on the number of individuals and budgetary constraints.

### Meeting location

In front of the Centennial Clock Tower Memorial Hall.

### Minimum participant count

1

### Previous proposal

Interview form

QR code for website





# Personal Career Counseling Schedule



9 : 5 0

Assemble and proceed to the venue.  
The venue will be determined by the number of attendees.

1 0 : 0 0

Personal career counseling commences.  
Initially, we will inquire about your strengths, interests, and aspirations for the future.

1 0 : 2 0

Introduction to universities, research disciplines, and career recommendations customized for participants.

1 0 : 4 0

Q&A

1 0 : 5 0

summary

1 1 : 0 0

Dismiss in front of the clock tower.





## ② Examinees Plan

### Campus tour and roundtable dialogue

This tour allows you to explore the campus and get a real sense of student life at Kyoto University. During the latter part of the roundtable discussion, you are invited to pose any inquiries to current Kyoto University students regarding study techniques, examination strategies, and the realities of university life.

duration

1.5-2 hour

Reservation must be made at least one week in advance.

Meeting  
location

In front of the Centennial  
Clock Tower Memorial Hall.

cost

3,000 yen per person and above

\* Varies based on the number of individuals and budgetary constraints.

Capacity

from 10 to 100 participants

QR code for  
website





# Campus Tour and Discussion Schedule



9 : 5 0      gather

1 0 : 0 0      The campus tour commences.  
An Introduction to the Campus Life of Kyoto University  
Students  
Please consult page 6 for comprehensive route information.

1 0 : 5 0      The tour concludes. Proceed to the discussion venue.  
\*Restroom breaks included

1 1 : 0 0      The roundtable discussion commences.  
Initially, all the student guides from Kyoto University introduced  
themselves.

1 1 : 1 0      10 students and 2 students from Kyoto University  
Question period for each group.  
\*Study techniques, examination strategies, collegiate experience, etc.

1 1 : 3 0      Set 2: Student guides from Kyoto University transition to a different  
group.

1 1 : 5 0      end

1 2 : 0 0      Dismiss in front of the clock tower.



# Actual case (50 second-year secondary school students)



- |           |   |
|-----------|---|
| 1 1 : 0 0 | Gather in front of the clock tower. Lunch at Lune (restaurant).   |
| 1 2 : 0 0 | We divided into groups of five and commenced our campus tour.   |
| 1 3 : 0 0 | The tour concludes. Proceed to the conference room located in the International Science and Innovation Building.    |
| 1 3 : 1 0 | The roundtable discussion commences. Initially, all the student guides from Kyoto University introduced themselves. |
| 1 3 : 1 5 | Question session for groups of ten students and two Kyoto University students.                                      |
| 1 1 : 3 0 | Set 2: Student guides from Kyoto University transition to a different group.  |
| 1 1 : 5 0 | Group photograph  |
| 1 2 : 0 0 | Dismiss in front of the clock tower.  |



## ② Examinees Plan

### Kyoto University dining experience

Lunch at the cafeteria frequented by  
Kyoto University students.

During the meal, you are welcome to inquire with current  
Kyoto University students about aspects of student life, study  
techniques, clubs, and residence halls.

#### duration

1 hour (weekdays only)  
Reservations must be made that your  
reservation is made at least three days in  
advance.

#### cost

3,000 yen per person and above  
\* Meal expenses reflect actual costs.

#### Meeting location

In front of the Centennial Clock  
Tower Memorial Hall.

#### Capacity

from 10 to 100 Participants

QR code for  
website





# Kyoto University Culinary Experience schedule



9 : 5 0      gather

1 0 : 0 0      Arrived at the cafeteria and placed an order. It tends to become crowded, so it is advisable to avoid lunchtime.

1 0 : 1 0      Let's start our meal..  
Discuss student life, study techniques, extracurricular activities, residential facilities, and more.

1 0 : 4 0      Conclusion of dining

1 0 : 4 5      Explore Kyoto University merchandise at the Clock Tower Co-op Shop.

1 1 : 0 0      Dismiss in front of the clock tower.





## ③Graduate Plan

### Alumni Campus Tour

This exclusive tour is designed for alumni, providing an opportunity to relive nostalgia while exploring the present state of Kyoto University. Current students will lead you through newly constructed buildings, the cafeteria, and iconic locations that have remained unchanged. As you reflect on your student days, you will also witness the harmonious coexistence of change and tradition at Kyoto University.

duration

1hour

Reservations must be made that your reservation is made at least three days in advance.

cost

3,000 yen per person and above  
\* Varies based on the number of individuals and budgetary constraints.

Meeting  
location

In front of the Centennial Clock  
Tower Memorial Hall.

Capacity

from 1 person

QR code for  
website



# Alumni Campus Tour schedule



9 : 5 0      gather

1 0 : 0 0      Commemorative photograph in front of the main entrance of  
Kyoto University.  
\*An unchanged appearance since 1893

1 0 : 1 5      History Exhibition Room within the Centennial Clock Tower  
Memorial Hall  
Reflecting on the history of Kyoto University evokes memories  
of the clock tower, a prominent symbol of the institution.

1 0 : 3 0      International Science and Innovation Center  
The most recent building was completed in 2015.

1 0 : 4 0      Yoshida Residence  
Kyoto University's renowned student dormitory, established in 1913.

1 1 : 0 0      Dismiss in front of the clock tower.





## ④ International students Plan

### Research and Student Life Excursion

This tour provides an opportunity to hear directly from international students at Kyoto University and gain insights into authentic student life.

You will explore a variety of locations, encompassing research activities, international student accommodations, dining facilities, and student amenities.

duration

**1hour**

Reservations must be made that your reservation is made at least three days in advance.

cost

3,000 yen per person and above  
\* Varies based on the number of individuals and budgetary constraints.

Meeting  
location

In front of the Centennial Clock  
Tower Memorial Hall.

Capacity

**1**

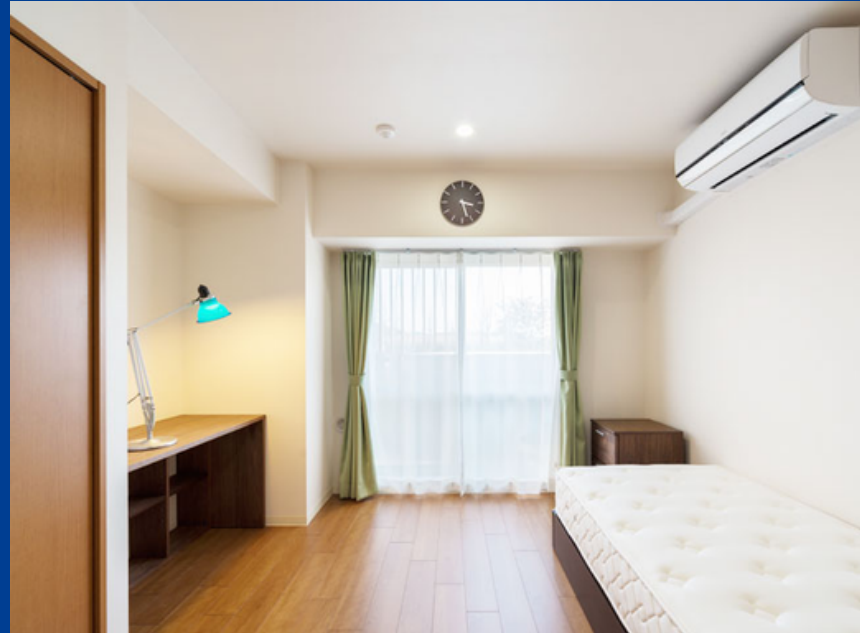
language

**Japanese/English**

QR code for  
website



# Research and Student Life Tour schedule



9 : 5 0      gather

1 0 : 0 0      Interview with an international student from the Faculty of Engineering regarding his research.  
The Faculty of Engineering hosts the highest number of international students at Kyoto University.

1 0 : 2 0      Yoshida International Conference Center  
\*Dormitory designated solely for international students. You may also meet students in the common areas.

1 0 : 3 5      International Education and Exchange Division Office  
A location where student peer tutors are consistently available.  
They will provide you with guidance when you encounter a problem.

1 1 : 0 0      Dismiss in front of the clock tower.

Following the tour, we suggest enjoying lunch at Lune, located at Kyoto University.  
Halal options are available.





# ⑤ Researchers Plan

## Kyoto University Heritage and Knowledge Walking Tour

This academic tour presents an overview of Kyoto University's history, research culture, and architectural heritage. You can explore the history of Kyoto University and the context of its research by visiting the historical exhibition room of the Clock Tower Memorial Hall and Sonjodo Hall. It is also suggested as an activity to engage in between, before, or after conferences.

duration

1hour

Reservations must be made that your reservation is made at least three days in advance.

cost

From 4,000 yen per person  
\* Varies based on the number of individuals and budgetary constraints.

Meeting  
location

In front of the Centennial Clock  
Tower Memorial Hall.

Capacity

1

language

Japanese/English

QR code for  
website





# Kyoto University Historical Heritage and Knowledge Walking Tour schedule



9 : 5 0      gather

1 0 : 0 0      History Exhibition Room within the Centennial Clock Tower  
Memorial Hall  
Discover the history of Kyoto University.

1 0 : 2 0      Sonjodo Reference Room (generally inaccessible to the public)  
Jomon pottery and haniwa are on display.

1 0 : 4 0      purchase Kyoto University merchandise at the Clock Tower Co-op Shop.

1 1 : 0 0      Dismiss in front of the clock tower.





# ⑥Tourist Plan

## Kyoto University Contemporary Architecture Tour

The Seibu Auditorium, a revered venue for rock music, along with the Sonjodo Hall and the Exhibition Hall of the Kyoto University Faculty of Letters.

A visit to two officially recognized tangible cultural properties.  
Current students of Kyoto University will offer a comprehensive and accessible overview of the history of each building.

### duration

1hour

Reservations must be made that your reservation is made at least three days in advance.

### cost

3,000 yen per person and above  
\* Varies based on the number of individuals and budgetary constraints.

### Meeting location

In front of the Centennial Clock Tower Memorial Hall.

### Capacity

from 1 person

QR code for website





# Kyoto University Contemporary Architecture Tour schedule



9 : 5 0      gather

1 0 : 0 0      Western Lecture Theatre  
A famous venue where Eikichi Yazawa once performed.

1 0 : 1 5      Sonjodo  
A structure characterized by a Japanese-Western eclectic design,  
incorporating vertical windows and a front porch.

1 0 : 3 0      Museum of Letters and Humanities  
The appearance has remained consistent since the Taisho period.  
The outdoor exhibition of the sarcophagus is also a notable feature.

1 0 : 3 0      Southeast Asian Studies Library  
One of the oldest brick structures in Kyoto City

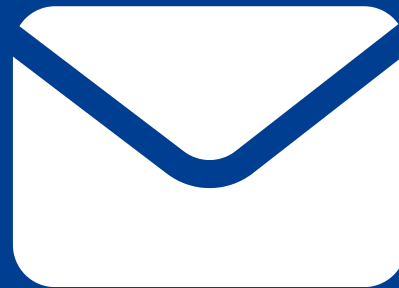
1 1 : 0 0      Dismiss in front of the clock tower.



# Application procedure



Submit through  
the online form



We will reach out to  
you within three  
business days.



Hearing  
conducted via  
Zoom



payment  
\*Wire transfer



The final deadline for  
reservations is three days  
before the tour.

Booking platform



At this stage, your  
reservation will be  
confirmed.

Upon confirmation of  
your booking, we will  
issue an invoice.  
If you are utilizing the  
service for the first time,  
Reservations must be  
made that the payment is  
transferred by the day  
prior to the event.

# Frequently Asked Questions (FAQs)

**Q** What occurs if it rains?

**A** The tour will continue in light rain; however, it may be canceled or rescheduled in the event of heavy rain. Panel discussions and cafeteria experiences can take place indoors; therefore, if you prefer, we can conduct them exclusively indoors.

**Q** Are tours offered in English?

**A** Yes, English tours are available. However, due to the limited availability of guides, we recommend securing your reservation at least one week in advance.

**Q** Am I able to cancel on the same day?

**A** Regrettably, we are unable to accommodate cancellations on the day of the event. The cancellation fees are outlined as follows:

- Up to three days prior to the tour: 50% of the participation fee
- The day before or on the day of the tour: 100% of the participation fee